

# Materiali e Finiture

*Materials and Finishes*

**Marac**

MADE IN ITALY

# Tessuti

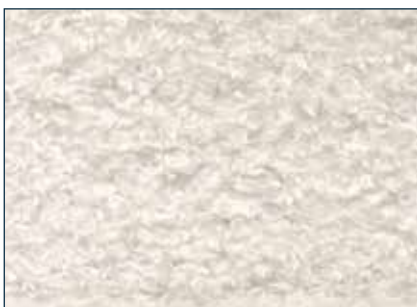
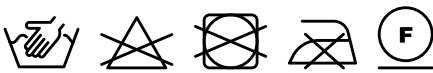
*Fabrics*



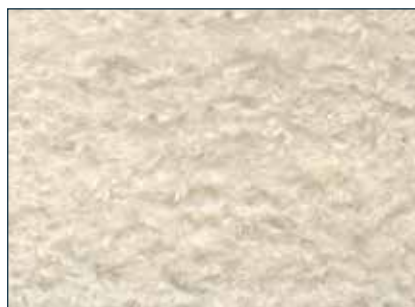
## ANOUK

Price category:	A
Composition:	100% PL RICICLATO
Weight:	700 gr/mtl
Martindale:	≥ 80.000 cycles
Pilling:	≥ 5
Light fastness:	≥ 4

Colori e finiture di questo campionario digitale devono essere valutati come immagini indicative del nostro campionario reale.  
*Colors and finishes from this digital sample-book must be considered like approximate images of our real sample-book.*



col. 900 Bianco



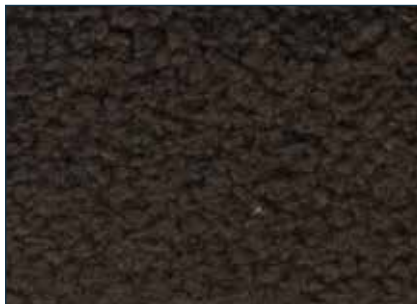
col. 907 Gesso



col. 902 Sabbia



col. 104 Visone



col. 105 Caffè



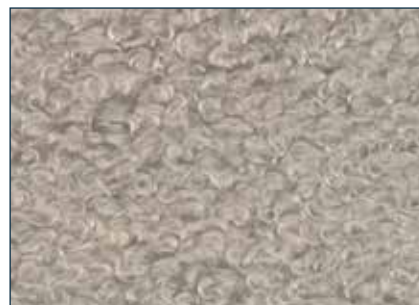
col. 303 Bruciato



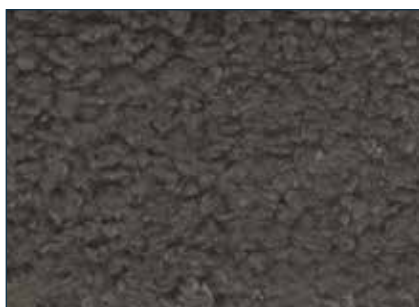
col. 304 Ruggine



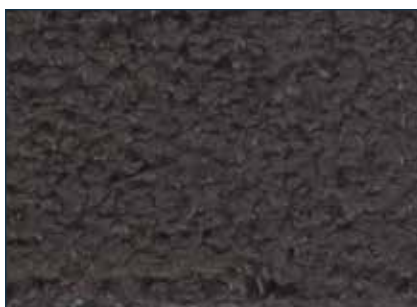
col. 908 Mostarda



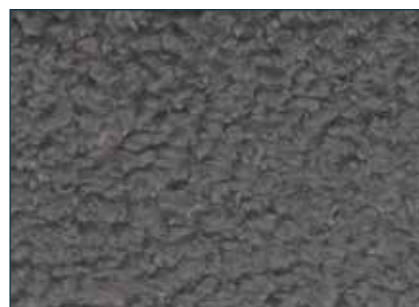
col. 905 Perla



col. 801 Lavagna



col. 807 Antracite



col. 803 Fumo



col. 600 Avio



col. 606 Notte



col. 503 Bottiglia



col. 502 Muschio

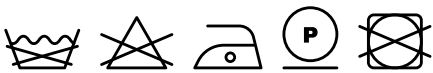
**ANOUK**



## BALTIMORA

Price category:	B
Composition:	50% PC - 23% LI - 19% CO - 8% NY
Weight:	990 gr/mtl
Martindale:	40.000 giri
Pilling:	3/4
Light fastness:	4/5

Colori e finiture di questo campionario digitale devono essere valutati come immagini indicative del nostro campionario reale.  
*Colors and finishes from this digital sample-book must be considered like approximate images of our real sample-book.*





col. 10 Bianco



col. 12 Sabbia



col. 4 Nocciola



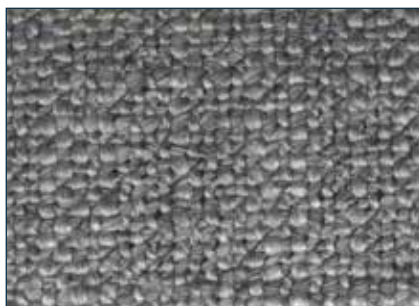
col. 27 Marrone



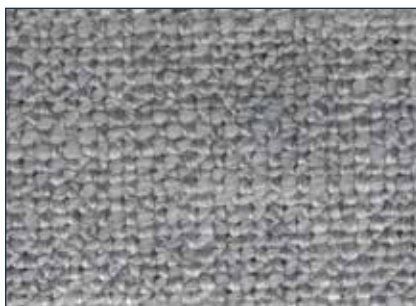
col. 42 Tortora



col. 29 Grafite

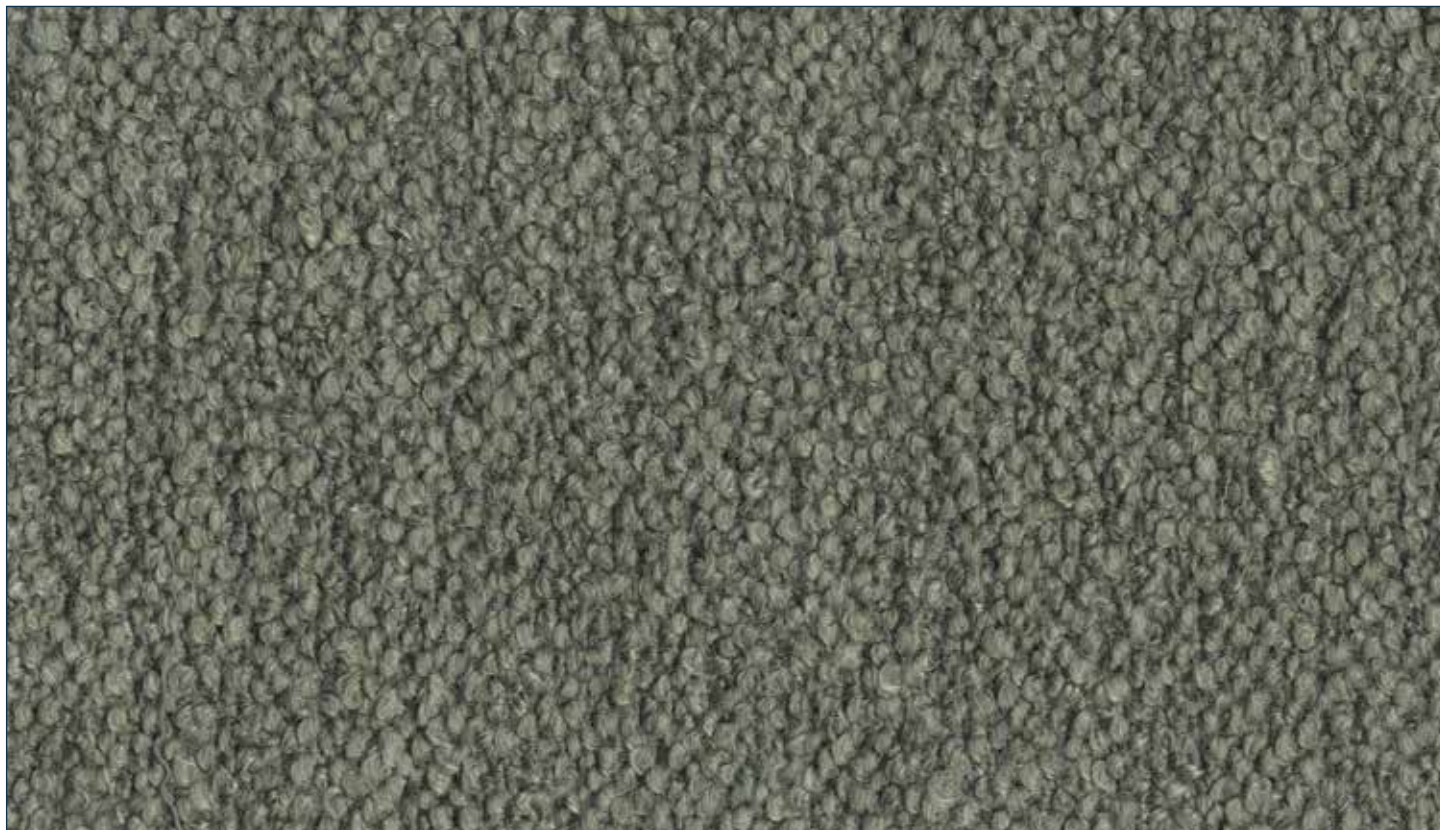


col. 35 Grigio



col. 33 Ghiaia

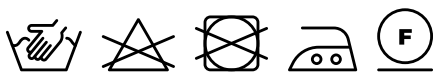
## BALTIMORA



## BARNUM

Price category:	B
Composition:	45% CO - 19% VI - 15% WO - 13% PC - 8% PL
Weight:	950 gr/mtl
Martindale:	≥ 60.000 giri
Pilling:	≥ 4
Light fastness:	≥ 5

Colori e finiture di questo campionario digitale devono essere valutati come immagini indicative del nostro campionario reale.  
*Colors and finishes from this digital sample-book must be considered like approximate images of our real sample-book.*



col. 1 Bianco



col. 24 Lana



col. 2 Corda



col. 4 Nocciola



col. 10 Piombo



col. 11 Marrone



col. 14 Fumo



col. 12 Asfalto



col. 13 Lavagna



col. 23 Bruciato



col. 21 Terracotta



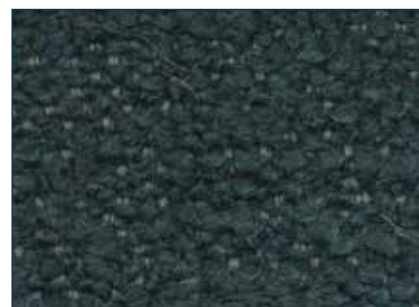
col. 5 Senape



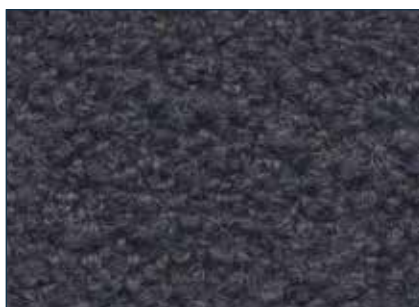
col. 8 Giada



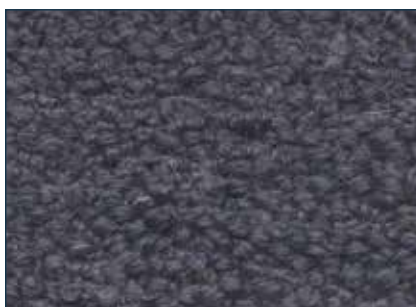
col. 9 Bosco



col. 20 Petrolio



col. 19 Notte



col. 16 Blu

## BARNUM

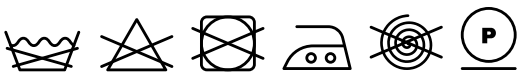




## CARAVANE

Price category:	B
Composition:	46% CO - 22% PC - 14% PL - 6% LI - 6% VI - 3% NY - 3% AF
Weight:	1030 gr/mtl
Martindale:	40.000 giri
Pilling:	4
Light fastness:	4/5

Colori e finiture di questo campionario digitale devono essere valutati come immagini indicative del nostro campionario reale.  
*Colors and finishes from this digital sample-book must be considered like approximate images of our real sample-book.*





col. 1 Burro



col. 3 Sabbia



col. 4 Nocciola



col. 5 Melange



col. 6 Acciaio

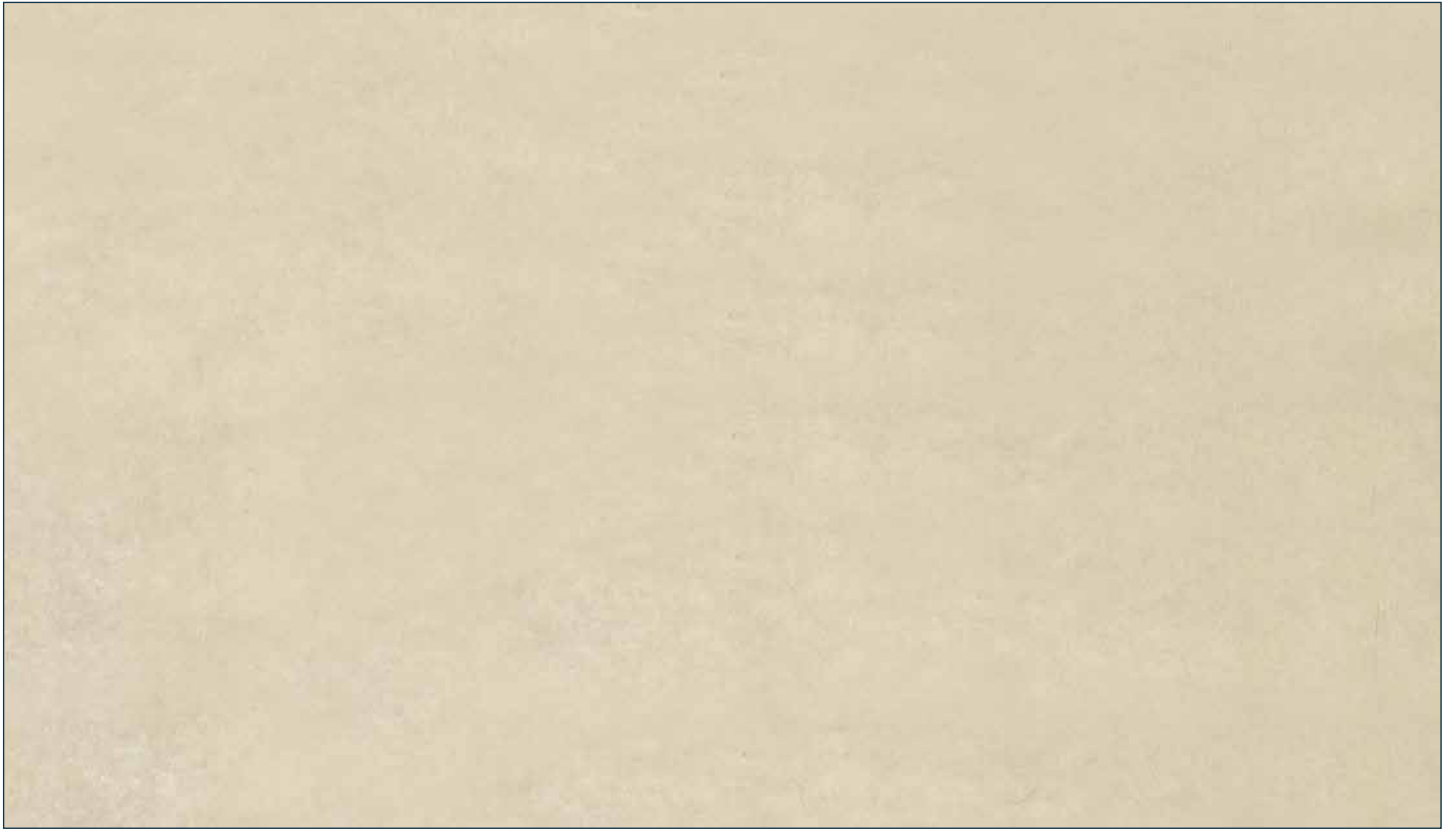


col. 7 Lavagna



col. 8 Antracite

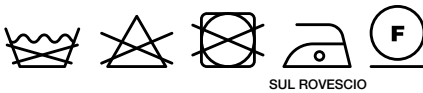
## CARAVANE



## DHOGAR

Price category:	C
Composition:	42% CO (back side) - 30% WO - 28% LYOCELL
Weight:	620 gr/mtl
Martindale:	≥ 45.000 giri
Pilling:	≥ 4/5
Light fastness:	≥ 5

Colori e finiture di questo campionario digitale devono essere valutati come immagini indicative del nostro campionario reale.  
*Colors and finishes from this digital sample-book must be considered like approximate images of our real sample-book.*



col. 1 Avorio



col. 5 Neve



col. 2 Lino



col. 3 Polvere



col. 4 Sabbia



col. 18 Peltro



col. 19 Ferro



col. 20 Ardesia



col. 23 Ombra



col. 30 Ottanio



col. 22 Navy



col. 15 Muschio



col. 27 Oliva



col. 14 Zolfo



col. 9 Ruggine



col. 8 Bruciato

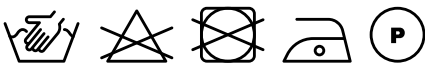
**DHOGAR**



## GAUCHO

Price category:	B
Composition:	35% VI - 30% PC - 20% CO - 15% PL
Weight:	900 gr/mtl
Martindale:	30.000 giri
Pilling:	4
Light fastness:	4/5

Colori e finiture di questo campionario digitale devono essere valutati come immagini indicative del nostro campionario reale.  
*Colors and finishes from this digital sample-book must be considered like approximate images of our real sample-book.*





col. 3 Bianco



col. 2 Sabbia



col. 4 Avorio



col. 9 Salvia



col. 5 Sacco



col. 6 Ecrù



col. 15 Tortora



col. 16 Felce



col. 11 Celeste



col. 14 Fiordaliso



col. 13 Bosco



col. 12 Mirto



col. 1 Beige



col. 8 Giallo



col. 7 Nocciola

## GAUCHO



## KATMANDU

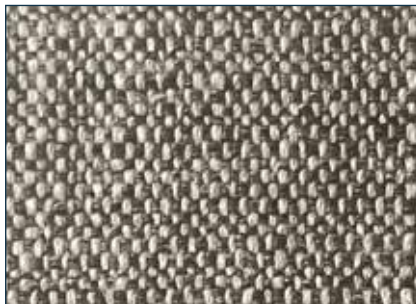
Price category:	B
Composition:	36% VI - 32% LI - 24% PC - 4%PA - 4%PL
Weight:	710 gr/mtl
Martindale:	25.000 giri
Pilling:	4
Light fastness:	3/4

Colori e finiture di questo campionario digitale devono essere valutati come immagini indicative del nostro campionario reale.  
*Colors and finishes from this digital sample-book must be considered like approximate images of our real sample-book.*

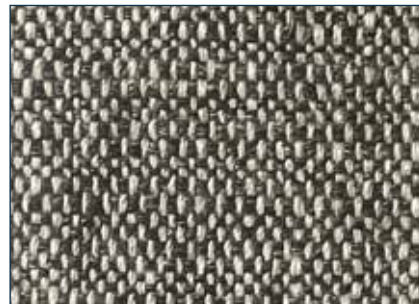




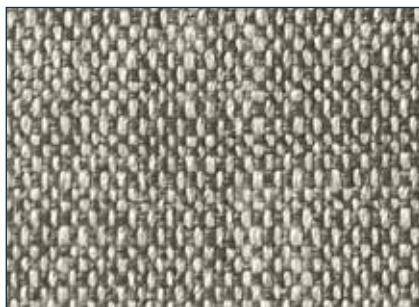
col. 1 Panna



col. 12 Marrone



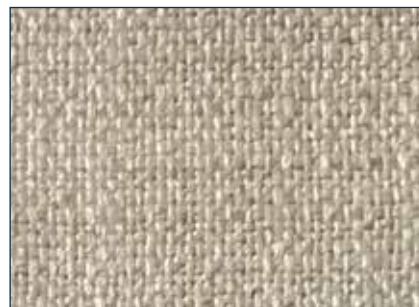
col. 13 Nero



col. 7 Salvia



col. 6 Blu



col. 2 Sabbia



col. 32 Grigio



col. 33 Grafite



col. 8 Acqua



col. 11 Porpora

## KATMANDU



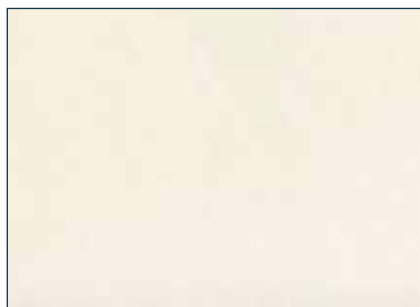


## LARIO

Price category:	B
Composition:	100% CO
Weight:	540 gr/mtl
Martindale:	> 70.000 giri
Pilling:	5
Light fastness:	4/5

Colori e finiture di questo campionario digitale devono essere valutati come immagini indicative del nostro campionario reale.  
*Colors and finishes from this digital sample-book must be considered like approximate images of our real sample-book.*





col. 1 Panna



col. 2 Crema



col. 3 Sabbia



col. 23 Cammello



col. 5 Nocciola



col. 2012 Tortora



col. 7 Castagna



col. 1403 Ocra



col. 14 Mattone



col. 2008 Rosso



col. 1405 Bordeaux



col. 9 Prato



col. 1401 Smeraldo



col. 1402 Bosco



col. 2002 Ebano

LARIO



col. 20 Glicine



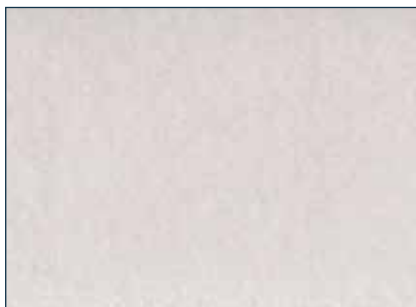
col. 1406 Avio



col. 58 Oceano



col. 54 Midnight



col. 29 Ghiaccio



col. 28 Ghiaia



col. 2003 Grigio



col. 1404 Antracite



col. 26 Nero

## LARIO



## MAGENTA

Price category:	B
Composition:	69% PC - 31% CO
Weight:	900 gr/mtl
Martindale:	30.000 giri
Pilling:	4
Light fastness:	5

Colori e finiture di questo campionario digitale devono essere valutati come immagini indicative del nostro campionario reale.  
*Colors and finishes from this digital sample-book must be considered like approximate images of our real sample-book.*





col. 16 Latte



col. 1 Cotone



col. 2 Sabbia



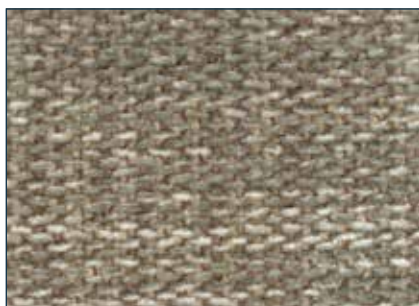
col. 3 Ghiaia



col. 14 Grafite



col. 7 Marrone



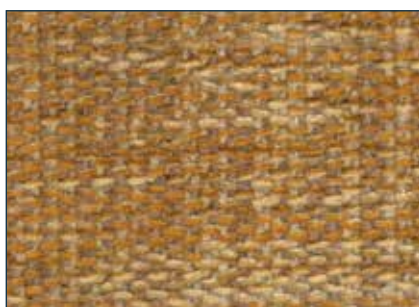
col. 4 Tortora



col. 6 Rosa Antico



col. 5 Salvia



col. 10 Ambra

**MAGENTA**



## MARMOLADA

Price category:	B
Composition:	29% PL - 25% WO - 25% PC - 21% CO
Weight:	720 gr/mtl
Martindale:	35.000 giri
Pilling:	3/4
Light fastness:	4/5

Colori e finiture di questo campionario digitale devono essere valutati come immagini indicative del nostro campionario reale.  
*Colors and finishes from this digital sample-book must be considered like approximate images of our real sample-book.*





col. 1 Bianco



col. 3 Sabbia



col. 2 Ghiaia



col. 6 Grigio



col. 14 Marrone



col. 9 Ruggine



col. 8 Giallo



col. 12 Verde

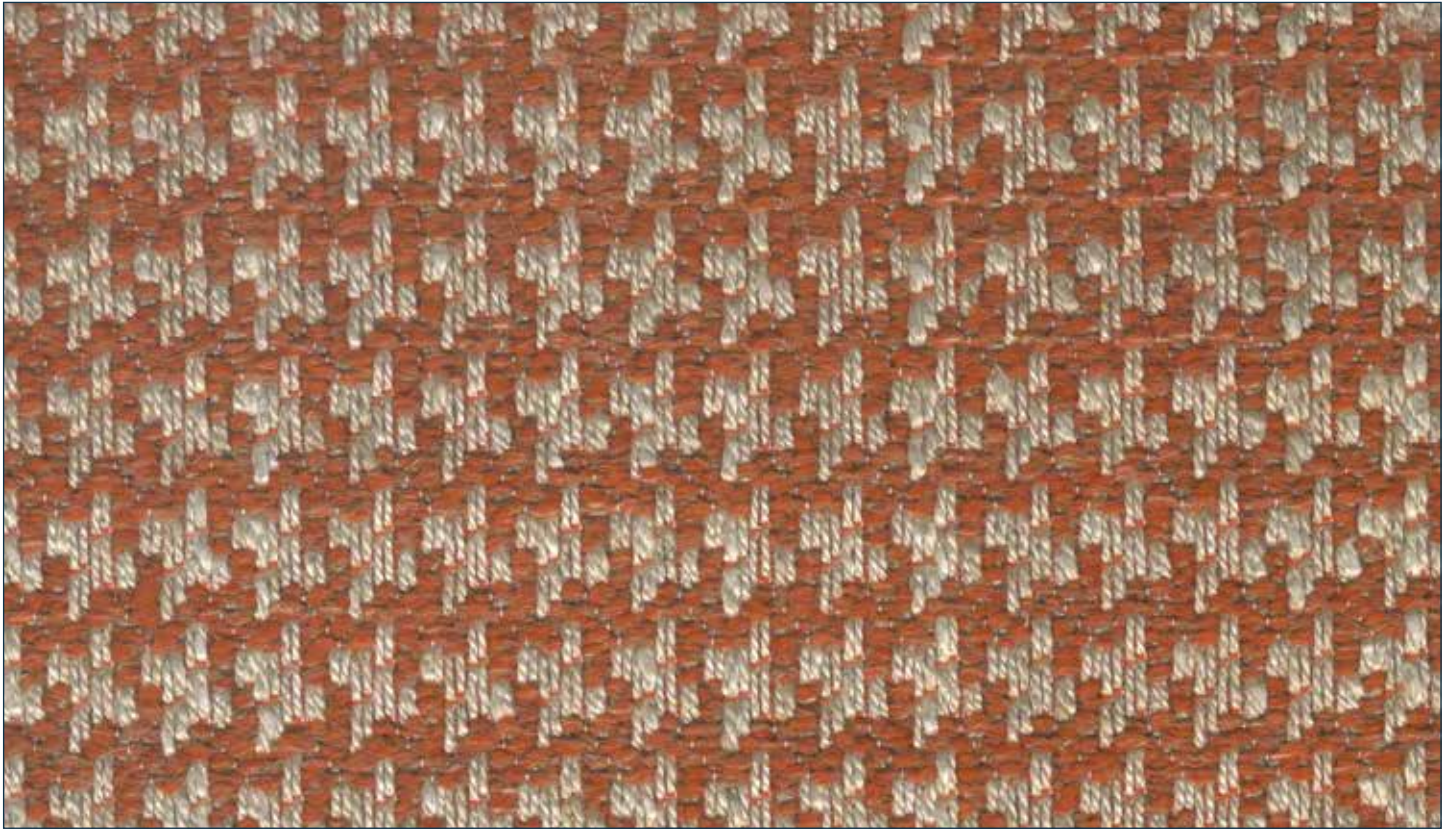


col. 16 Petrolio



col. 11 Blu

## MARMOLADA



## NIELS

Price category:	A
Composition:	31% VI - 25% PL - 17% PC - 13% LI - 13% CO - 1% SE
Weight:	750 gr/mtl
Martindale:	25.000 giri
Pilling:	3/4
Light fastness:	5

Colori e finiture di questo campionario digitale devono essere valutati come immagini indicative del nostro campionario reale.  
*Colors and finishes from this digital sample-book must be considered like approximate images of our real sample-book.*



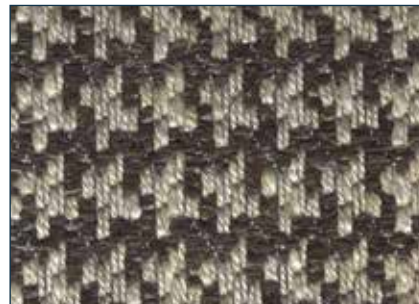




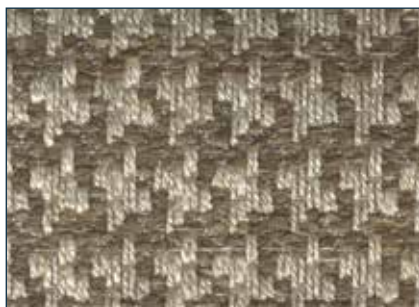
col. 205 Arancio



col. 213 Bordeaux



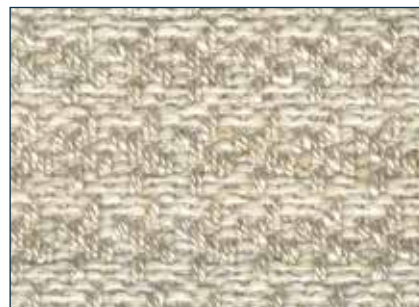
col. 204 Marrone



col. 224 Nocciola



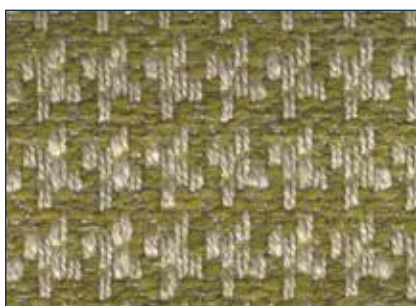
col. 214 Sabbia



col. 202 Latte



col. 219 Prato



col. 209 Lime



col. 289 Tiffany



col. 208 Blu

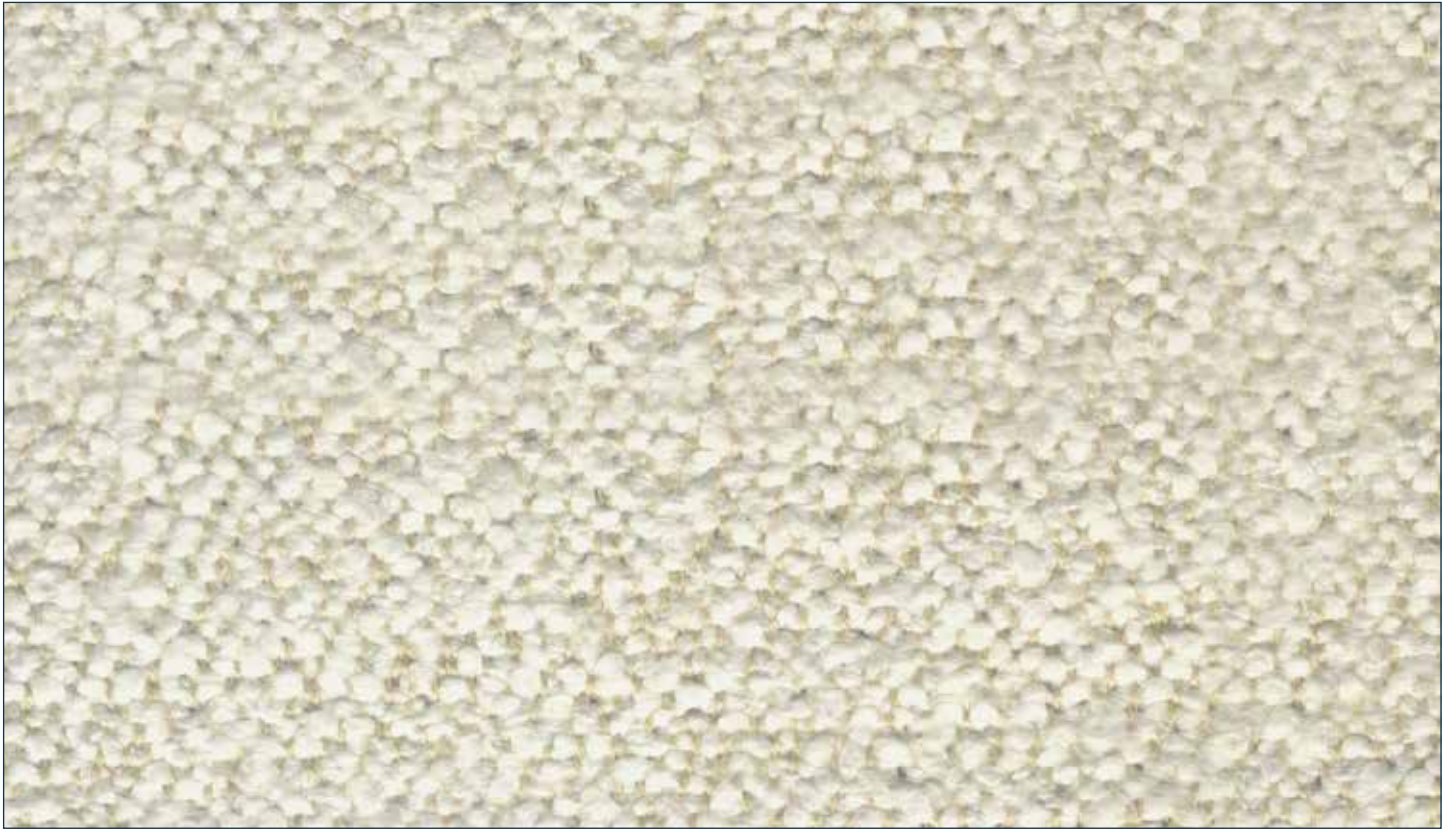


col. 207 Ghiaia



col. 211 Grafite

**NIELS**



## PADDY

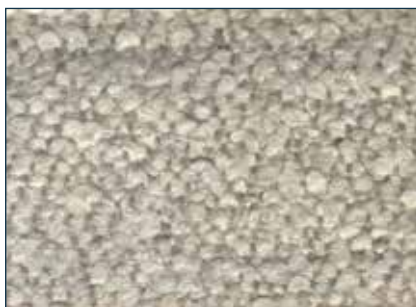
Price category:	B
Composition:	28% PC - 27% CO - 21% VI - 14% WO - 7% PL - 3% PA
Weight:	1130 gr/mtl
Martindale:	30.000 giri
Pilling:	4
Light fastness:	4/5

Colori e finiture di questo campionario digitale devono essere valutati come immagini indicative del nostro campionario reale.  
*Colors and finishes from this digital sample-book must be considered like approximate images of our real sample-book.*





col. 4 Latte



col. 1 Sabbia



col. 2 Corda



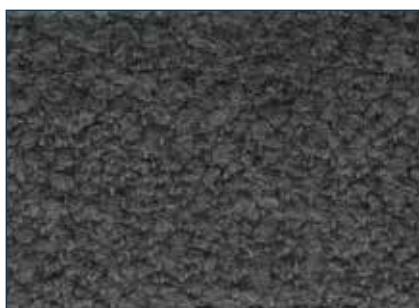
col. 8 Tortora



col. 3 Mattone



col. 12 Petrolio

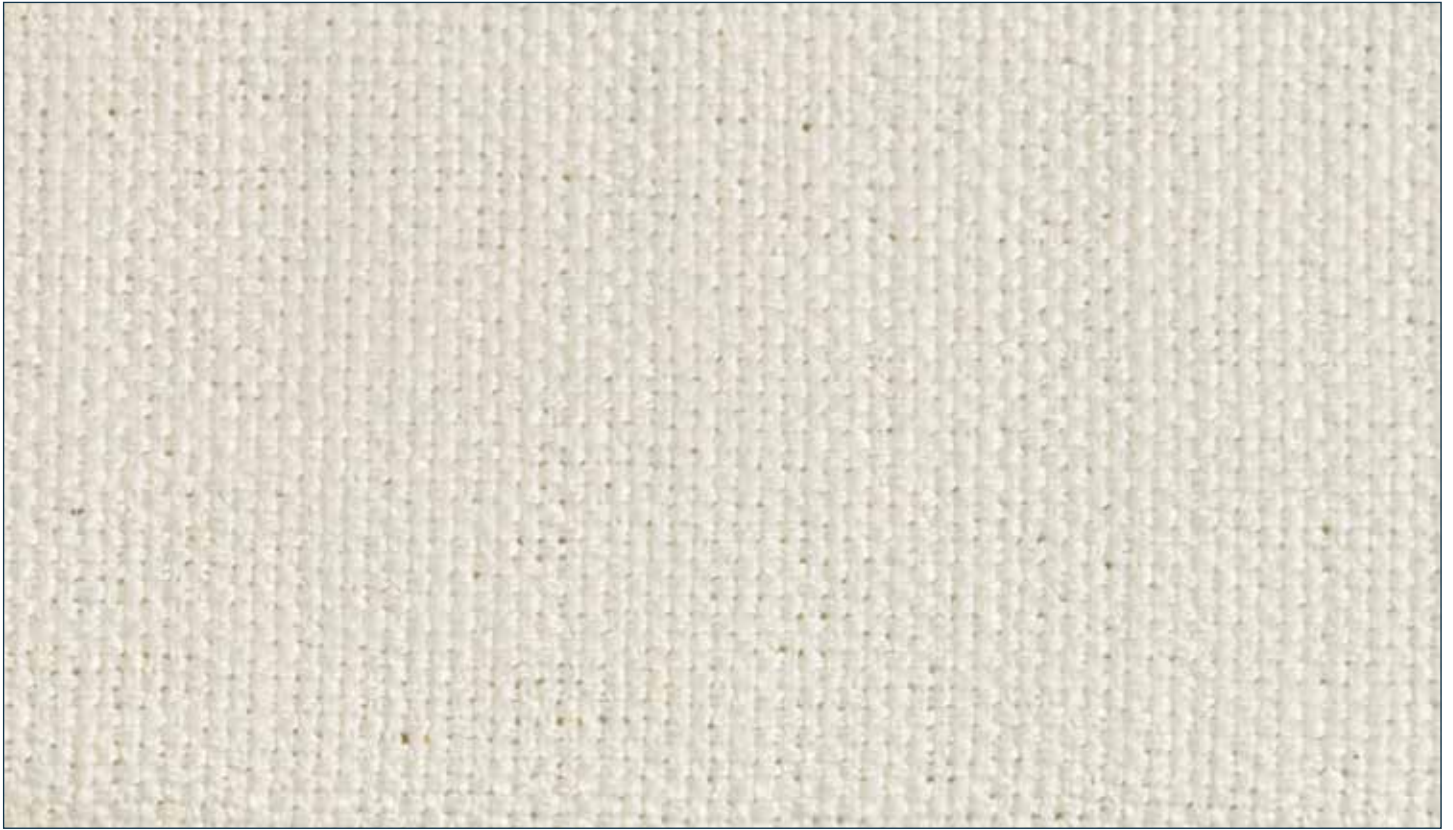


col. 9 Grafite



col. 11 Grigio

## PADDY



## PANAMA LINO

Price category:	B
Composition:	93% LI - 7% NY
Weight:	1100 GR./MTL.
Martindale:	20.000 giri
Pilling:	3/4
Light fastness:	4/5

Colori e finiture di questo campionario digitale devono essere valutati come immagini indicative del nostro campionario reale.  
*Colors and finishes from this digital sample-book must be considered like approximate images of our real sample-book.*





col. 60



col. 17



col. 80



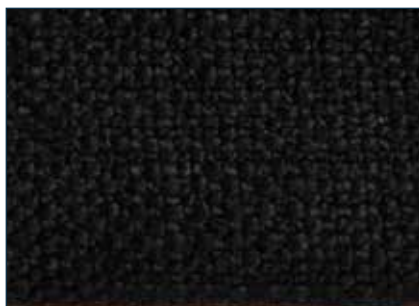
col. 72



col. 68



col. 35



col. 6

## PANAMA LINO



## SENKY

Price category:	B
Composition:	93% LI - 7% NY
Weight:	1100 GR./MTL.
Martindale:	20.000 giri
Pilling:	3/4
Light fastness:	4/5

Colori e finiture di questo campionario digitale devono essere valutati come immagini indicative del nostro campionario reale.  
*Colors and finishes from this digital sample-book must be considered like approximate images of our real sample-book.*





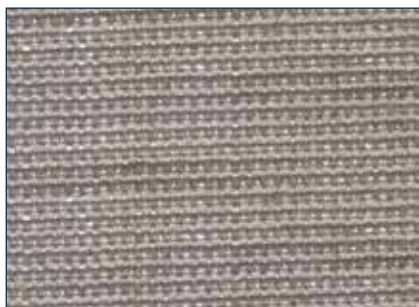
col. 2 Greggio



col. 29 Sabbia



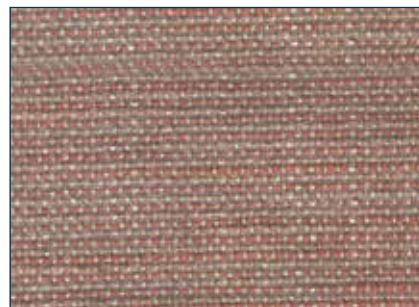
col. 5 Crusca



col. 6 Tortora



col. 20 Castagna



col. 10 Phard



col. 1 Perla



col. 25 Acciaio



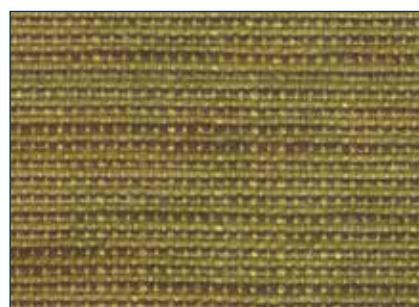
col. 7 Lapis



col. 24 Antracite



col. 8 Asfalto



col. 13 Oliva

**SENKY**



## SOLIMANO

Price category:	B
Composition:	30% VI - 25% CO - 20% WO - 20% PL - 5% PC
Weight:	990 gr/mtl
Martindale:	40.000 giri
Pilling:	4
Light fastness:	4/5

Colori e finiture di questo campionario digitale devono essere valutati come immagini indicative del nostro campionario reale.  
*Colors and finishes from this digital sample-book must be considered like approximate images of our real sample-book.*







col. 1 Latte



col. 12 Sabbia



col. 24 Nocciola



col. 6 Caramello



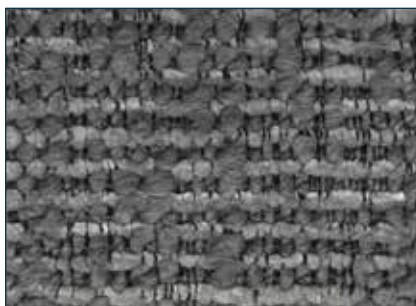
col. 2 Grafite



col. 23 Ebano



col. 22 Asfalto



col. 18 Grigio

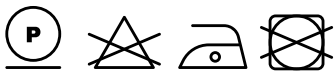
**SOLIMANO**



## THUY

Price category:	B
Composition:	61% PC - 18% CO - 7% JU - 6% PL - 4% NY - 4% VI
Weight:	950 gr/mtl
Martindale:	30.000 giri
Pilling:	3/4
Light fastness:	4/5

Colori e finiture di questo campionario digitale devono essere valutati come immagini indicative del nostro campionario reale.  
*Colors and finishes from this digital sample-book must be considered like approximate images of our real sample-book.*





col. 1 Latte



col. 2 Sabbia



col. 5 Corda



col. 4 Tortora



col. 6 Mattone



col. 8 Petrolio



col. 10 Grafite



col. 9 Grigio

THUY



## TRIO

Price category:	B
Composition:	56% CO - 30% VI - 14% LI
Weight:	900 gr/mtl
Martindale:	36.000 giri
Pilling:	3/4
Light fastness:	4/5

Colori e finiture di questo campionario digitale devono essere valutati come immagini indicative del nostro campionario reale.  
*Colors and finishes from this digital sample-book must be considered like approximate images of our real sample-book.*

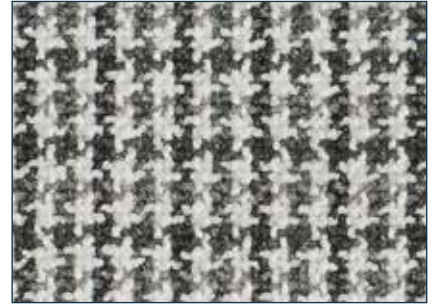




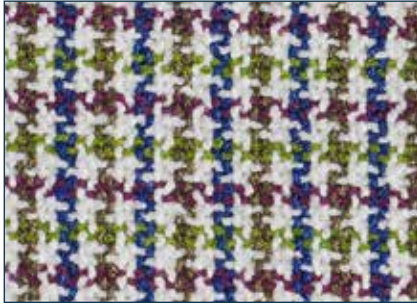
col. 080



col. 011



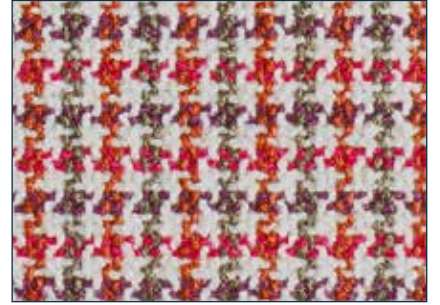
col. 091



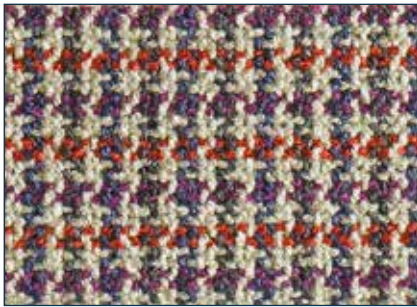
col. 016



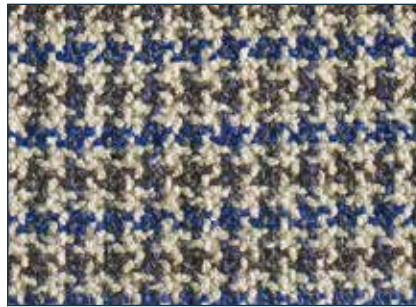
col. 005



col. 054



col. 001



col. 004

## TRIO



## VESTALE

Price category:	B
Composition:	56% PC - 20% WO - 16% PES - 8% CC
Weight:	940 gr/mtl
Martindale:	35.000 giri
Pilling:	4
Light fastness:	4/5

Colori e finiture di questo campionario digitale devono essere valutati come immagini indicative del nostro campionario reale.  
*Colors and finishes from this digital sample-book must be considered like approximate images of our real sample-book.*





col. 1 Bianco



col. 11 Ghiaccio



col. 12 Grigio



col. 13 Grafite



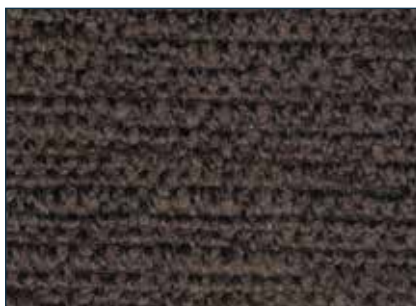
col. 4 Sabbia



col. 5 Tortora



col. 10 Salvia



col. 6 Marrone



col. 8 Rosa Antico



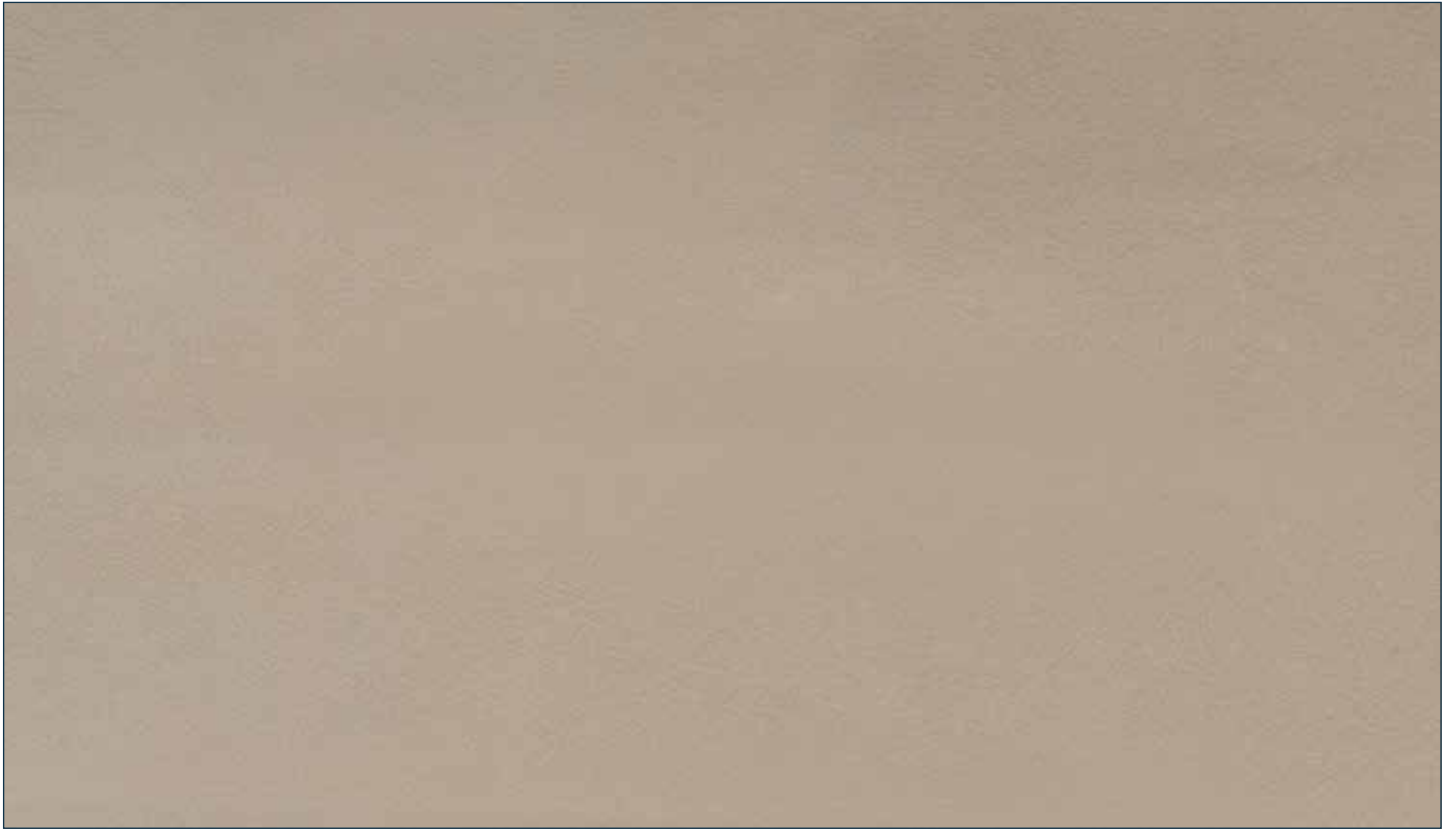
col. 9 Avena

## VESTALE

# Pelli

*Leathers*





## NABUK

Categoria: ANILINA  
NATURAL LEATHER  
EUROPEAN ORIGIN  
Thickness: 1,2 - 1,4 mm

Colori e finiture di questo campionario digitale devono essere valutati come immagini indicative del nostro campionario reale.  
*Colors and finishes from this digital sample-book must be considered like approximate images of our real sample-book.*



FLAME  
RETARDANT

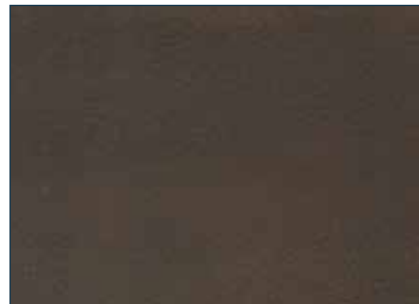
EN1021.1-2  
BS5852.0-1  
CAL. TB117



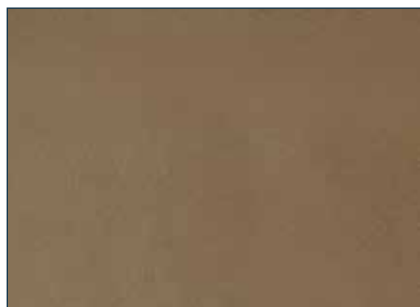
col. Conchiglia



col. Seppia



col. Testa di moro



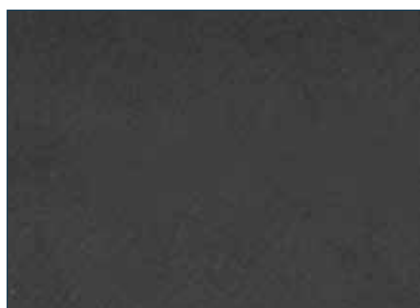
col. Marrone



col. Terra



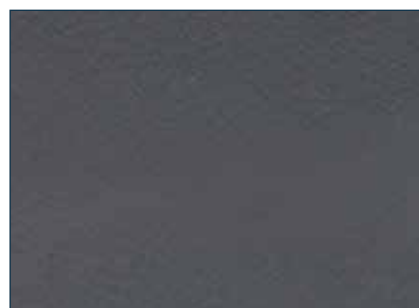
col. Grigio



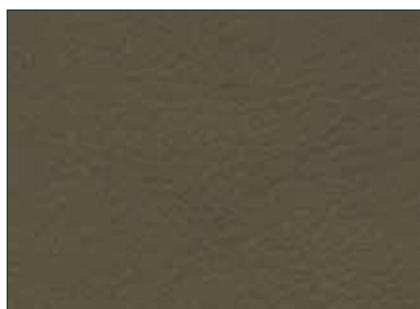
col. Antracite



col. Oceano



col. Orione



col. Salvia

**NABUK**



## **NAPPA**

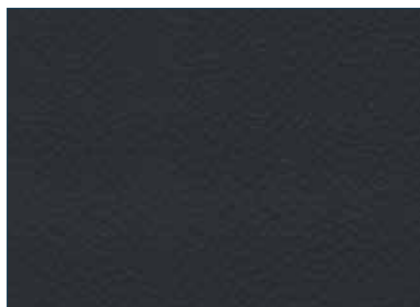
Categoria: **NAPPA**

NATURAL LEATHER

EUROPEAN ORIGIN

Thickness: **1,2 mm**

Colori e finiture di questo campionario digitale devono essere valutati come immagini indicative del nostro campionario reale.  
*Colors and finishes from this digital sample-book must be considered like approximate images of our real sample-book.*



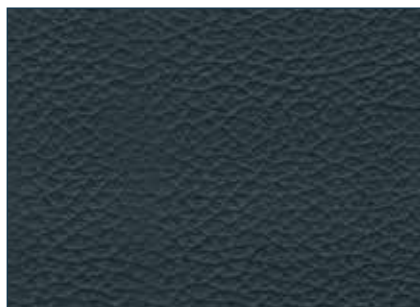
col. 2200 Nero



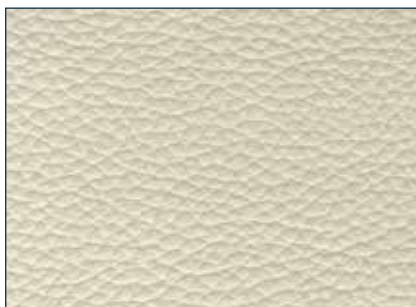
col. 2245 Bianco



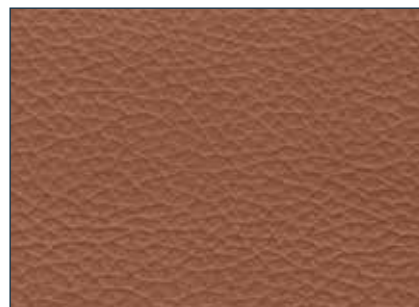
col. 2613 Tortorino



col. 2611 Blu



col. 2900 Burro



col. 2201 Cuoio



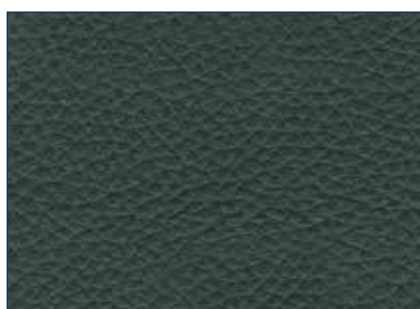
col. 2577 Cipresso



col. 2246 Perla



col. 2214 Tabacco



col. 2516 Bosco



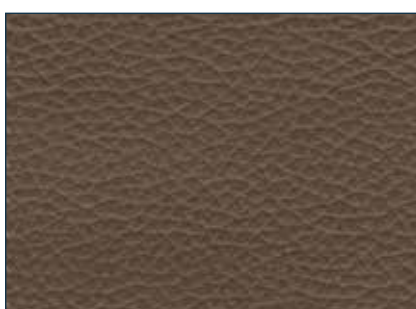
col. 2204 Cemento



col. 2213 Talpa



col. 2206 Beige



col. 2260 Fango



col. 2297 Amaranto

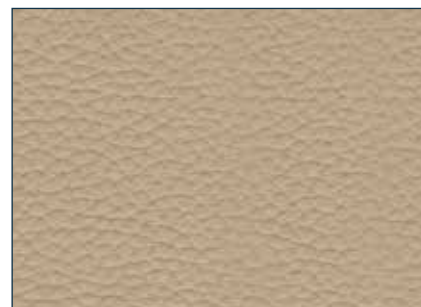
## NAPPA



col. 2250 Grigio



col. 2205 Antracite



col. 2268 Sabbia



col. 2212 Ebanò



col. 2300 Rosso

## NAPPA



## SETA

Categoria: **ANILINA**

NATURAL LEATHER

ORIGIN FROM ITALY AND GERMANY

Thickness: **1,3 - 1,5 mm**

Colori e finiture di questo campionario digitale devono essere valutati come immagini indicative del nostro campionario reale.  
*Colors and finishes from this digital sample-book must be considered like approximate images of our real sample-book.*



FLAME  
RETARDANT

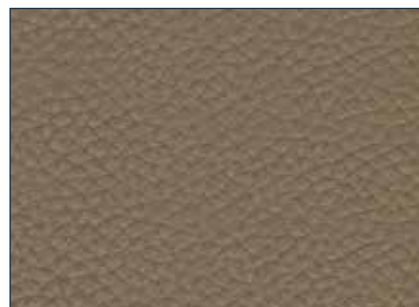
EN1021.1-2  
BS5852.0-1  
CAL. TB117



col. Latte



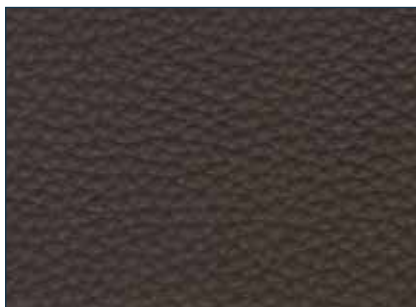
col. Creta



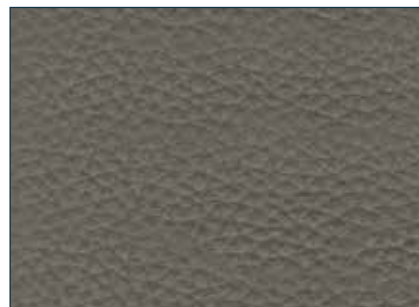
col. Tortora



col. Talpa



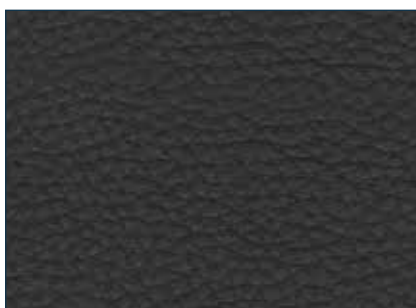
col. Ebano



col. Grigio



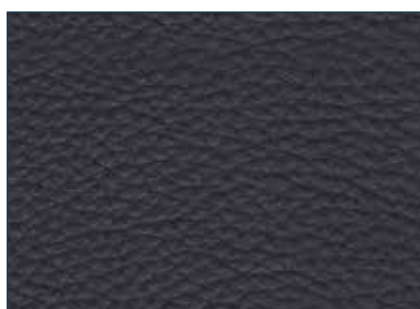
col. Piombo



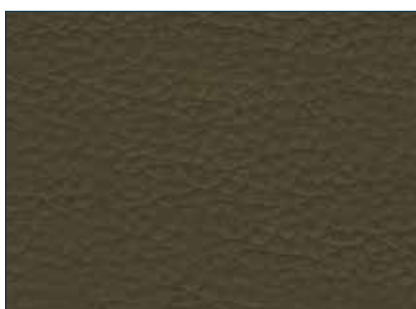
col. Nero



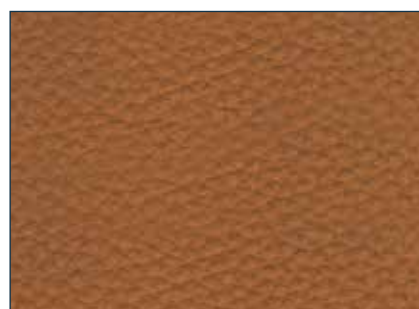
col. Pilote



col. Midnight



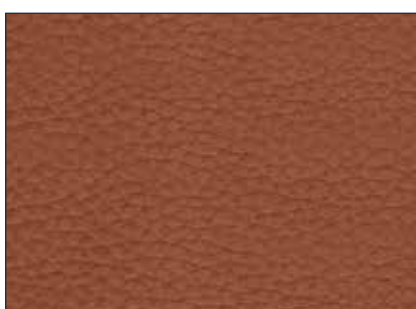
col. Militare



col. Biscotto



col. Caramello

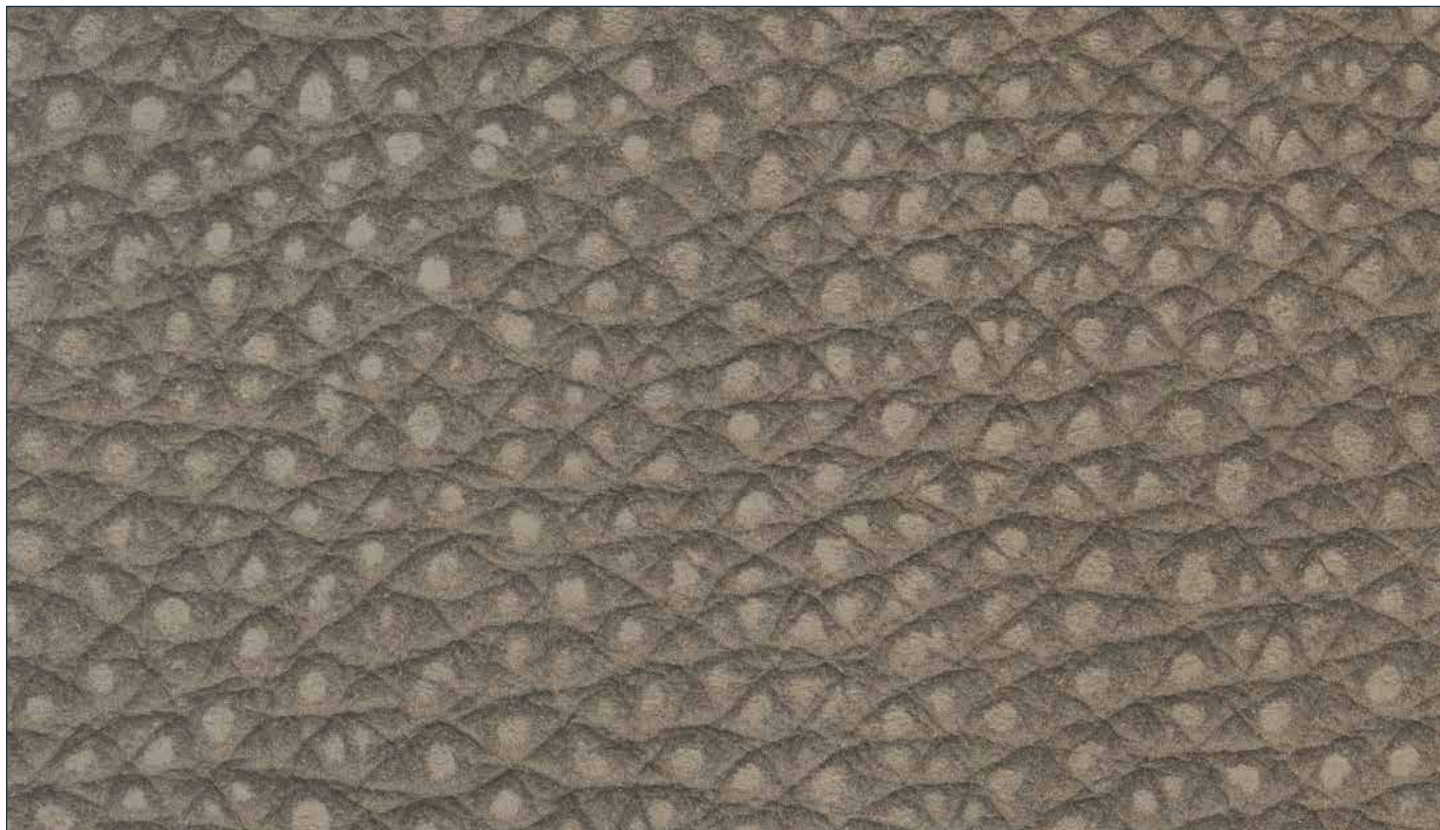


col. Brandy



col. Rubino

**SETA**



## SIVIGLIA

Categoria: ANILINA

NATURAL LEATHER

EUROPEAN ORIGIN

Thickness: 1,3 - 1,4 mm

Colori e finiture di questo campionario digitale devono essere valutati come immagini indicative del nostro campionario reale.  
*Colors and finishes from this digital sample-book must be considered like approximate images of our real sample-book.*

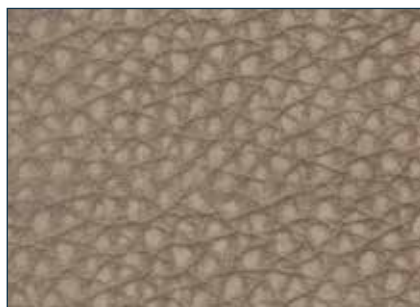


FLAME  
RETARDANT



WATER  
RESISTANT





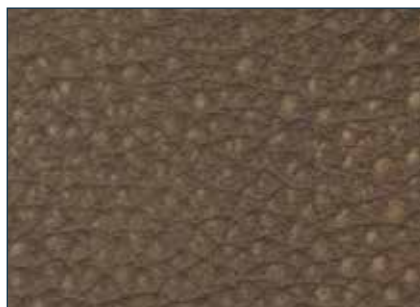
col. 1027 Sabbia



col. 1021 Tortora



col. 1034 Ebanò



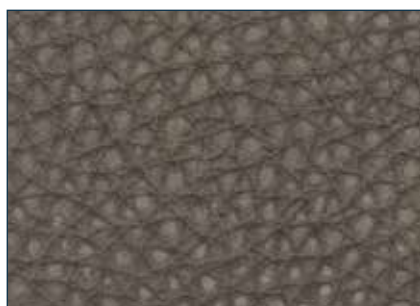
col. 1011 Marrone



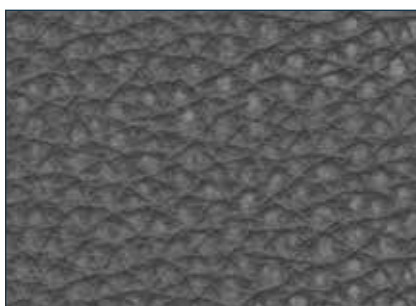
col. 1006 Biscotto



col. 1031 Ghiaia



col. 1036 Talpa



col. 1052 Grigio



col. 1010 Antracite



col. 1016 Mattone



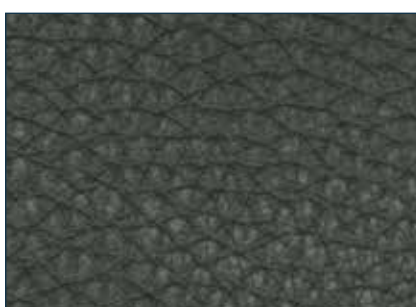
col. 1028 Verderame



col. 1043 Petrolio



col. 1017 Cobalto



col. 1039 Bosco



col. 1003 Ocra

## SIVIGLIA

# Materiali

*Materials*

## LEGNO MASSELLO

/ SOLID WOOD



Frassino Moka / *Moka Ash*



Frassino Noce / *Noce Ash*



Frassino Naturale / *Natural Ash*



Frassino Fumè / *Fumè Ash*



Noce Canaletto / *Canaletto Walnut*



Rovere Naturale / *Natural Oak*

Colori e finiture di questo campionario digitale devono essere valutati come immagini indicative del nostro campionario reale.  
*Colors and finishes from this digital sample-book must be considered like approximate images of our real sample-book.*

## LACCATI LUCIDI E OPACHI

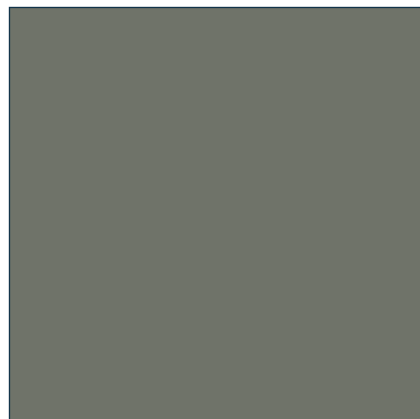
/ GLOSSY AND MATT LACQUERED



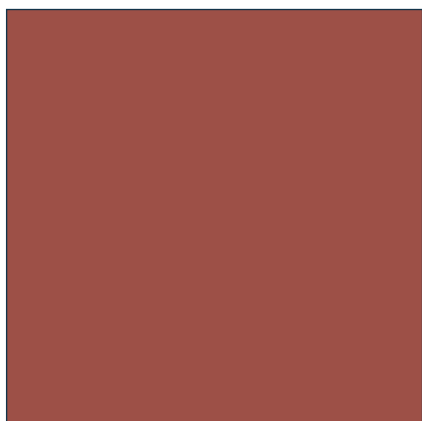
Oltremare



Pepe



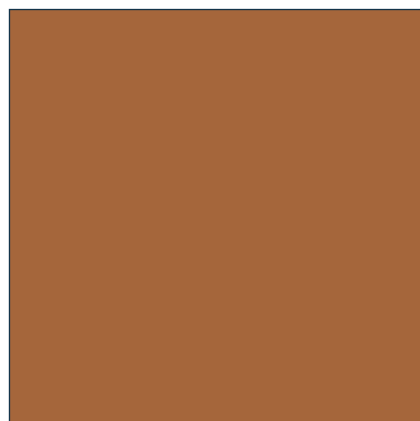
Muschio



Mattone



Pioggia



Ambra

Colori e finiture di questo campionario digitale devono essere valutati come immagini indicative del nostro campionario reale.  
*Colors and finishes from this digital sample-book must be considered like approximate images of our real sample-book.*

## MARMO

/ MARBLE



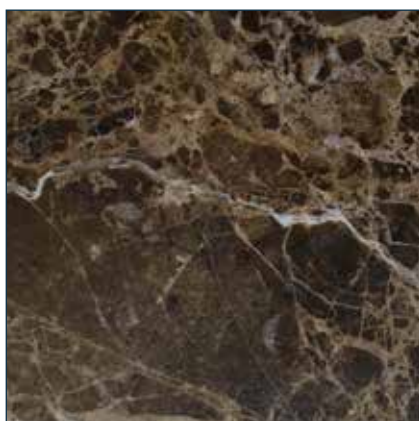
Calacatta



Orobico



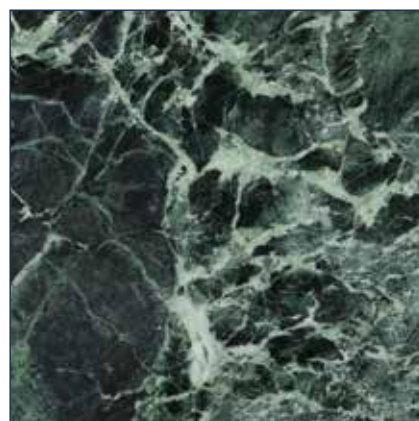
Carrara



Emperador Brown



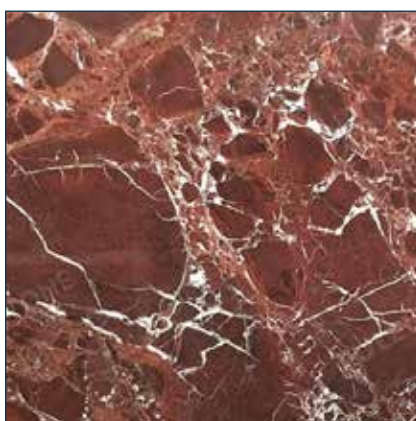
Noir Saint Laurent



Verde Alpi



Travertino



Rosso Levanto

Colori e finiture di questo campionario digitale devono essere valutati come immagini indicative del nostro campionario reale.  
*Colors and finishes from this digital sample-book must be considered like approximate images of our real sample-book.*

## ECOMARMO

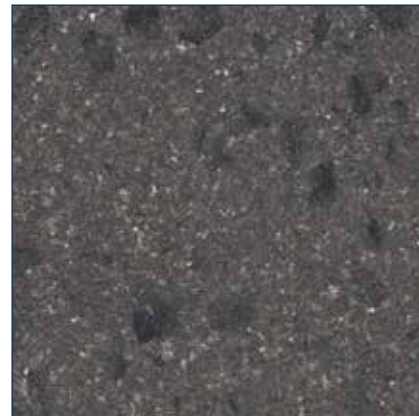
/ ECOMARBLE



Candoglia



Lava Rock



Dark Grey



Ambra

## RESINA

/ RESIN



Rosso oriente

Colori e finiture di questo campionario digitale devono essere valutati come immagini indicative del nostro campionario reale.  
*Colors and finishes from this digital sample-book must be considered like approximate images of our real sample-book.*

## CUOIO NATURALE

/ NATURAL LEATHER



Caramello



Tortora



Grafite

Colori e finiture di questo campionario digitale devono essere valutati come immagini indicative del nostro campionario reale.  
*Colors and finishes from this digital sample-book must be considered like approximate images of our real sample-book.*

**Marac**  
MADE IN ITALY